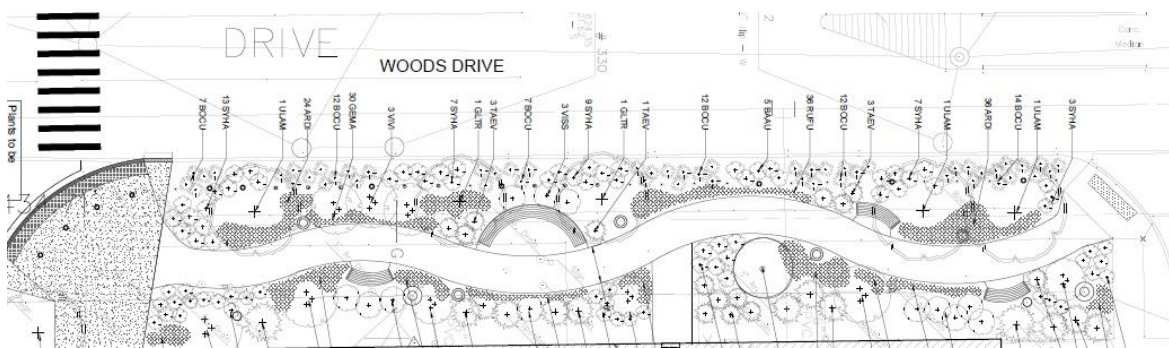




ILLINOIS HOLOCAUST MUSEUM
& EDUCATION CENTER

PEACE GARDEN ACTIVITY

Donors Harvey L. Miller and Steve Sarowitz supported the idea of adding a Peace Garden to the side of the Museum facing Woods Drive. It is a tranquil way to approach the Museum, and a place to reflect after you have left.



These plans went from a simple drawing, to a beautiful space that is enjoyed by 1000's of visitors.



In the peace garden there are several plaques with inspirational quotes and lots of beautiful flowers, bushes, and trees. Your job is to find those plaques, and report on the quotes!

Can you find all 5? Write down the author of the quote, and then the quote!

#1 AUTHOR & QUOTE:

#2 AUTHOR & QUOTE:

#3 AUTHOR & QUOTE:

#4 AUTHOR & QUOTE:

#5 AUTHOR & QUOTE: